



RECYCLABLES COMPACTOR On Site Recycling System

GENERAL

Fully automated compaction system for recycling of waste products and production of briquettes as a commercial product, or as a general waste reduction device for industries burdened with large volumes of waste. The safety features of the **recyclables compactor** comply with high European safety standards. Recyclables such as cardboard, paper, sawdust, plastics, styrofoam, and aluminium and steel cans are easily loaded into the hopper of the **recyclables compactor**. The two stage continuous feed compacting process releases the briquettes from the chute on the side of the unit. Two microprocessor controlled consoles make it easy to operate, record hours of operation and monitor oil pressure and temperature.



FEATURES

- Volume is reduced by 95%
- Simple to use, easy to operate
- Versatile and efficient
- Compact and robust
- Easy installation
- Occupies only 3 m² of space
- Hydraulic pressure 25 t
- Processes up to 300 kg/hr
- Microprocessor operation
- Hopper capacity 0.8 m³
- Continuous feed



TECHNICAL SPECIFICATIONS

- Dimensions 3m x 3m x 2m (L x W x H)
- Weight 1.6 tonne
- Power 400 V 7.5 kW 50 Hz
- Noise level 75dB
- Large hopper opening 950 x 600mm
- Briquettes 80 x 80 x 100 - 300mm
- Larger compactors are available

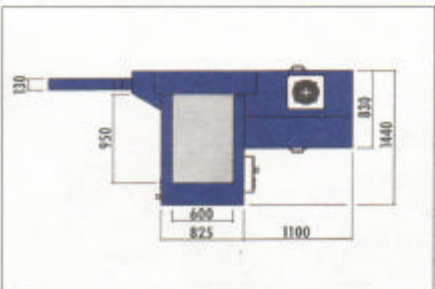
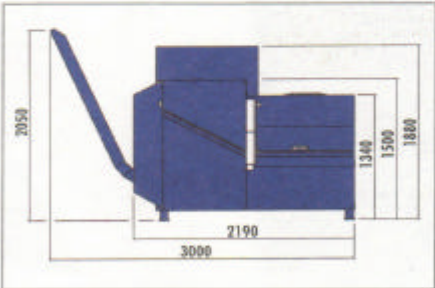
BENEFITS

- On site recycling system
- Minimises transport costs
- Turns paper and cardboard into fuel briquettes
- Plastics (incl. Styrofoam) and aluminium become stackable briquettes
- Applications in mining, shipping, industry, remote communities, country towns, etc.



SPARTEL PTY LTD

Environmental Solutions for a Sustainable World



all measures in mm.

Machine weight
1,6 t

subject to alterations 8/96

→ **Fully automatic compression system**

- after filling hopper with waste material the pre-compression of material will start automatically
- the compressed briquettes will be pushed continuously through the discharge channel and can be removed by means of any container

→ **Volume Reduction up to 95%**

- high press power: 25kN
- high surface pressure 390 kg/qcm

→ **Bulk weight up to 600 kg/m³**

- high press power: 250 kN (ca. 25 t press weight)
- briquetting achieved without the addition of any other substance

→ **High capacity throughput**

- in the case of carton/paper up to 300 kg/h

→ **Continuous feeding**

- loading of material during briquetting
- suction feeding is possible in combination with automatic start

→ **Operator friendly**

- micro processor control
- easy loading
- low noise under 75dB

→ **Large loading aperture**

- generous loading inlet (950 x 800mm) facilitates ease of material loading

→ **Large chamber capacity**

- large loading chamber : 0.8 m³

→ **High safety standards**

- complies to German Standards

→ **Easily installed**

- compact design
- small floor area requirement, under 3m²
- low machine height

→ **Optional accessories**

- automatic start light beam
- feed hopper up to 2m³ material input
- galvanised finish for wet environment
- collection containers
- shredder equipment

Press weight
25tonne

max. Briquette dim.
80x80x100-300mm

Briquette density
1m³ up to 600kg



SPARTEL PTY LTD

Environmental Solutions for a Sustainable World

Spartel Pty Ltd is an environmental technology, engineering, and consulting company carrying out contract work for private companies, industry, and government institutions.

The company specialises in solid waste treatment, management and pollution control, particularly contaminated site remediation, composting, vermiculture, waste auditing and integrated waste management strategies. We are also active in research and development of proprietary technologies that service the needs of the waste management industry.

Hofstede & Associates is the consulting division of Spartel Pty Ltd.

CONSULTING & RESEARCH

- Chemical and biological analysis of all types of organic wastes.
- Assessment of compostability of all types of organic wastes using computer controlled incubators.
- Formulation of mixtures from different organic wastes for composting purposes.
- Analysis of compost products in regard to Quality Control and Standard compliance.
- Glass house and field trials to support product formulation and to demonstrate beneficial properties and quality of compost and soil amendment products.
- Development of process and product control management systems.
- Waste stream analysis and Total Waste Management Strategies.
- Community attitude surveys on recycling and composting systems.
- Community education on recycling and home composting programs.
- Fully integrated waste management and recycling systems.
- Biosolids reuse and management.

ENGINEERING

- Feasibility studies for large scale composting facilities.
- Preparation of regional recycling strategies.
- Design and preparation of engineering specifications for composting plants.
- Design and manufacture of vermiculture systems.
- Design of mobile, forced aeration composting facilities for on-site.
- Design of municipal and green waste composting facilities.
- Design and construction of odour control systems.
- Stormwater filter systems to remove organic and heavy metal contaminants.

CONTRACTING

- Contaminated site remediation system design, including bioremediation, chemical fixation and vapour extraction.
- Mine site rehabilitation.
- Compost plant construction and operation.

WASTE MANAGEMENT TECHNOLOGIES

- **FABCOM**[®] large scale hybrid composting system.
- **BIOBOX**[®] in-vessel composting system for in situ treatment.
- **METALOK**[®] compound for managing heavy metal pollution in solid and liquid waste and contaminated soils.
- **Glass Crusher** for on-site glass crushing and volume reduction.
- **Recyclables Compactor** which reduces volume of your recyclables by up to 95% and produces fuel briquettes as a commercial commodity from plastics and cardboard. It can also process aluminium and steel cans and tins.

HOW CAN WE HELP YOU?

Contact us now for all your Waste Management and Pollution Control needs.

Murdoch University Campus South St Murdoch, Perth 6150, Western Australia
Phone (61 8) 9360 6699 Fax (61 8) 9360 7223
PO Box 1097 West Leederville Western Australia 6007
Email compactor@spartel.com.au